

Validate the Performance of Q-View Imagers

The Q-View Qualification Plate is used to qualify the performance of the Q-View Imager and the Q-View Imager Pro. Using the product code that is input into the Q-View Software, the LED light produced by the Qualification Plate is read and the data is analyzed based on IQ/OQ/PQ criteria. This tool provides a means to ensure consistent performance over time and establishes confidence that all processes are functioning within predetermined specifications.

Before delivery, every Q-View Imager purchased from Quansys Biosciences is tested to be within stringent operating standards using a Q-View Qualification Plate. This ensures that every Imager is performing optimally. This process of qualification is an ongoing procedure and it is recommended that imagers are tested routinely to ensure accurate readings of important data as per each company's respective maintenance and quality guidelines.



Features:

- ▶ NIST traceable
- ▶ ON/OFF switch
- ▶ Activation switch
- ▶ Permanently sealed optical chamber
- ▶ User accessible battery compartment

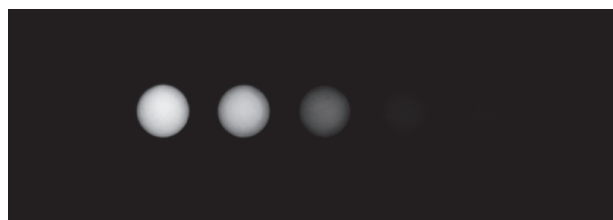


Image Capture of Q-View Qualification Plate

System Configuration

Increase productivity with Quansys products and services. Save Time, Sample and Money.

Catalog # Product

104402GR	Q-View Imager Qualification Plate*
105802GR	Q-View Imager Qualification Plate Calibration

*The certification of the Q-View Imager Qualification Plate lasts for one year and will expire one year after receipt. After the first year, the Q-View Imager Qualification Plate can be calibrated and recertified on an annual basis. Please contact Quansys for more information.

Technical Specifications

Dimension: 5.0" x 3.4" x 0.57"

Weight: 8 oz

Construction: CNC machined Aluminum body, Stainless steel back covers

Battery: Lithium battery pack, 6.4V, 1 Ah

Light sources: Two independently closed-loop controlled, constant light level LEDs

Wavelength: Selected to match wavelength emitted from Q-Plex assays

Light outputs: 7 levels (wells A1 – A7) derived from primary LED source covering the same range as light emitted from Q-Plex assays, 1 (well A8) derived from the secondary LED source

Stability: LED based lights: +/- 5%

Battery check: Red LED ON indicates the battery voltage >4.5V



©2014 Quansys Biosciences Inc. All rights reserved. Q-View and Q-Plex are Trademarks of Quansys Biosciences Inc. Specifications, terms and pricing are subject to change. Not all products are available in all countries. Please consult your local sales representative for details. For research use only.

Quansys Biosciences

365 N 600 W • Logan, UT 84321 • Fax: 435-750-6869
888-QUANSYS (782-6797) • www.quansysbio.com

Q-Plex™ ARRAYS

Our Q-Plex Arrays are quantitative multiplex ELISAs with distinct proteins deposited in a defined array. Choose one of our standard kits for immediate delivery or customize the exact array you need.

Q-View™ IMAGERS

The Q-View Imager Pro and Q-View Imager LS are high quality, low-cost imaging systems for chemiluminescent assay imaging.

Q-View™ SOFTWARE

The Q-View Software is a user-friendly image analysis app that enables the acquisition and analysis of large amounts of multiplex ELISA data.

SAMPLE TESTING SERVICE

Our lab runs immunoassays on a wide variety of biological samples. Increase productivity and focus on your core research while we test your samples for you.

QUANSYS BIOSCIENCES



www.quansysbio.com