



Q-View™ Imager Plus

Advanced Imaging for Multiplex ELISA

The Q-View™ Imager Plus is a high-resolution imaging system designed to capture and analyze chemiluminescent signals from 96-well plates in multiplex ELISA assays. Built for accuracy and ease of use, it delivers consistent, reliable results with minimal hands-on time which is ideal for both research and high-throughput testing.

With advanced optics, active thermal management, and powerful image processing, the Q-View Imager Plus ensures clear, accurate data across a variety of assays. When used with Q-View™ Software, it becomes a complete solution for image capture, analysis, and reporting that streamlines workflows for users.

Key Features & Benefits

- **More Precise and Consistent Qualification**

Built-in lighting and a battery-free plate make qualification simpler and more consistent. Requalification is only needed once a year, saving time and reducing lab interruptions.

- **High-Resolution Imaging with Enhanced Processing**

Advanced optics and upgraded image processing capture sharp, detailed chemiluminescent images of 96-well plates—ensuring accurate signal detection across all analytes, even low-abundance targets.

- **Temperature-Controlled Chamber**

A precision cooling system keeps the chamber stable, improving assay sensitivity and reproducibility.

- **Multiplex ELISA Compatibility**

Built specifically for chemiluminescent multiplex ELISA assays, enabling the simultaneous detection of multiple biomarkers with minimal sample volume.

- **Integrated Barcode Reader**

The built-in barcode scanner reduces manual errors and boosts efficiency, especially in high-throughput labs.

- **Seamless Q-View™ Software Integration**

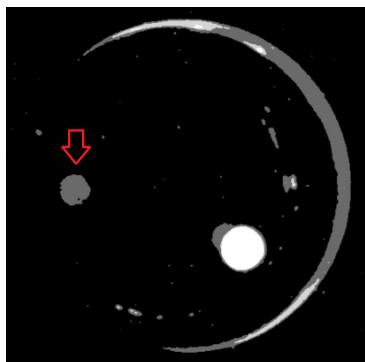
Works with Q-View Software for intuitive image acquisition, analysis, and data export, streamlining the entire workflow from capture to result.



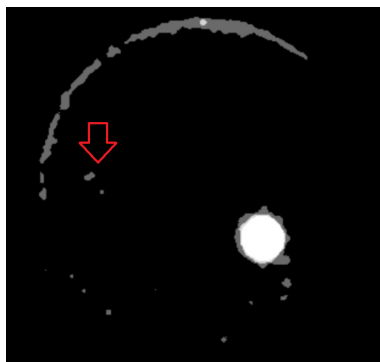
Q-View™ Imager LS vs. Plus: Enhanced Detail and Sensitivity

Quality control images comparing the Q-View Imager LS and Q-View Imager Plus show clear improvements with the Q-View Imager Plus. It captures finer spot details that may be harder to distinguish on the Q-View Imager LS, thanks to enhanced image resolution and noise reduction.

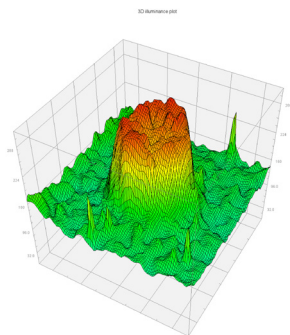
The Q-View Imager Plus also detects extremely dim spots much more clearly, standing out from background noise thanks to advanced cooling and higher image resolution. Overall, the Q-View Imager Plus delivers sharper, more detailed, and more sensitive images.



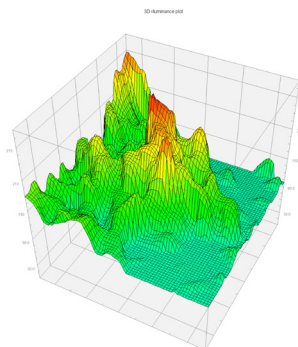
Q-View Imager Plus extremely dim spot well view



Q-View Imager LS extremely dim spot well view



Q-View Imager Plus extremely dim spot 3D view



Q-View Imager LS extremely dim spot 3D view

Q-View Imager Plus Specifications

Resolution:	~35 Megapixels
Sensor Type:	CMOS
Control:	Q-View Software
Power:	100-240V AC 50/60Hz 150W
Optics:	Basler C125-1218-5M-P
Image Application:	Chemiluminescent SBS plate format
Connection to PC:	USB 3.0 (Type A) or greater <i>USBC is not supported</i>
Dimensions:	9.63 x 12.50 x 14.12 in (Width x Depth x Height) 24.45 x 31.75 x 35.88 cm

Minimum Computer Specifications

Operating System:	Windows 10 or 11
Processor:	4 processing cores
RAM:	8 GB
Connection to PC:	USB 3.0 (Type A) or greater <i>USBC is not supported</i>
Screen Resolution:	1280 x 800 or greater



Quansys Biosciences

365 North 600 West
Logan, UT 84321
www.quansysbio.com

Fax: 435-750-6869
Phone: 435-752-0531
Toll Free: 888-QUANSYS (782-6797)



Quansys is an ISO 9001:2015 and ISO 13485:2016 registered company and complies with GMP. Products are designed, developed, and manufactured according to the procedures outlined in our Quality Management System.

©2025 Quansys Biosciences Inc. All rights reserved. Q-View and Q-Plex are Trademarks of Quansys Biosciences Inc. ISO is a trademark of the International Standards Organization. Specifications, terms and pricing are subject to change. Not all products are available in all countries. Please consult your local sales representative for details.

BRQB1026.01